

# CONCEPT MODELS

<http://www.con-sys.com//Index.htm>  
email:concept\_models@con-svs.com

8331 Sheep Ranch Rd.  
Mountain Ranch, CA 95246



**NOTE:** This kit consists of resin castings and must be assembled with an ACC cement (not provided) – both the thicker types as well as the thin. Solvent cements will **NOT** bond the parts together! Resin parts are more fragile than common styrene plastic used in injection molded models. Use reasonable care in handling and do not apply any solvents..

**HALLIBURTON OIL CO. HOPPER CAR**

Item No.	PART DESCRIPTION	QTY.
1	Underframe	1
2	Top Deck	1
3	Tank Bottoms (conical)	3
4	Tank Centers (tubing)	3
5	Tank Tops	3
6	Draft Gear Box Covers	2
7	1/8" Screws	2
8	Brake Stand	1
9	Brake Wheel	1
10	Pin, Small	1
11	Brake Valve	1
12	Brake Reservoir	1
13	Brake Cylinder	1
14	Catwalks	3
15	Decals	1
16	Instructions	1

## WARNING

Some parts may have lead encapsulated within them. In the event the lead is exposed for any reason, do not allow it to remain on the skin. Dispose of any lead shavings that may result. Obey all safety precautions of all suggested cements and assembly materials.

## Gluing with ACC Cements – USE WITH CARE

ACC cements allow the modeler to work very quickly. A general rule is to use the thin cements to glue long joints taking advantage of capillary action that makes the cement run the length of the seam. The thicker cement is suited to applying large area parts to each other. An accelerator can be applied sparingly. One technique is to apply the glue to one part and the accelerator to the other part to be joined. I also use a Q-tip to apply a minute amount of accelerator to the glue after the parts have been joined. The accelerator triggers the ACC cement to set very quickly. It is only slightly slower with the thicker cement. Work very carefully when positioning the parts for gluing. ACC cements adhere very quickly and permanently

## Instructions

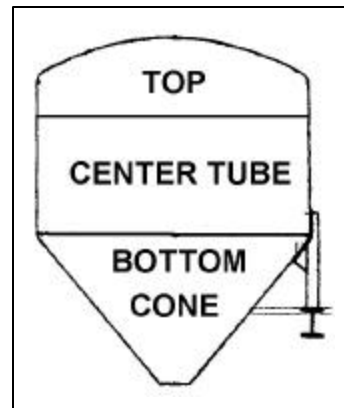
### Tools Required

All basic model workers tools – files, motor-tool with fine burrs, hobby knife, #76 drill.

**PREPARATION** Wash the parts before assembling with a dish washing detergent such as “Dawn”. Rub lightly with a soft sponge. Remove all flash from the castings including the "webbed: areas. **DO NOT REMOVE THE "X" BRACING ON THE TANK SUPPORT ASSEMBLY.**

## ASSEMBLY

**1** Assemble the three tanks by cementing the top and bottom cone to the center tube.



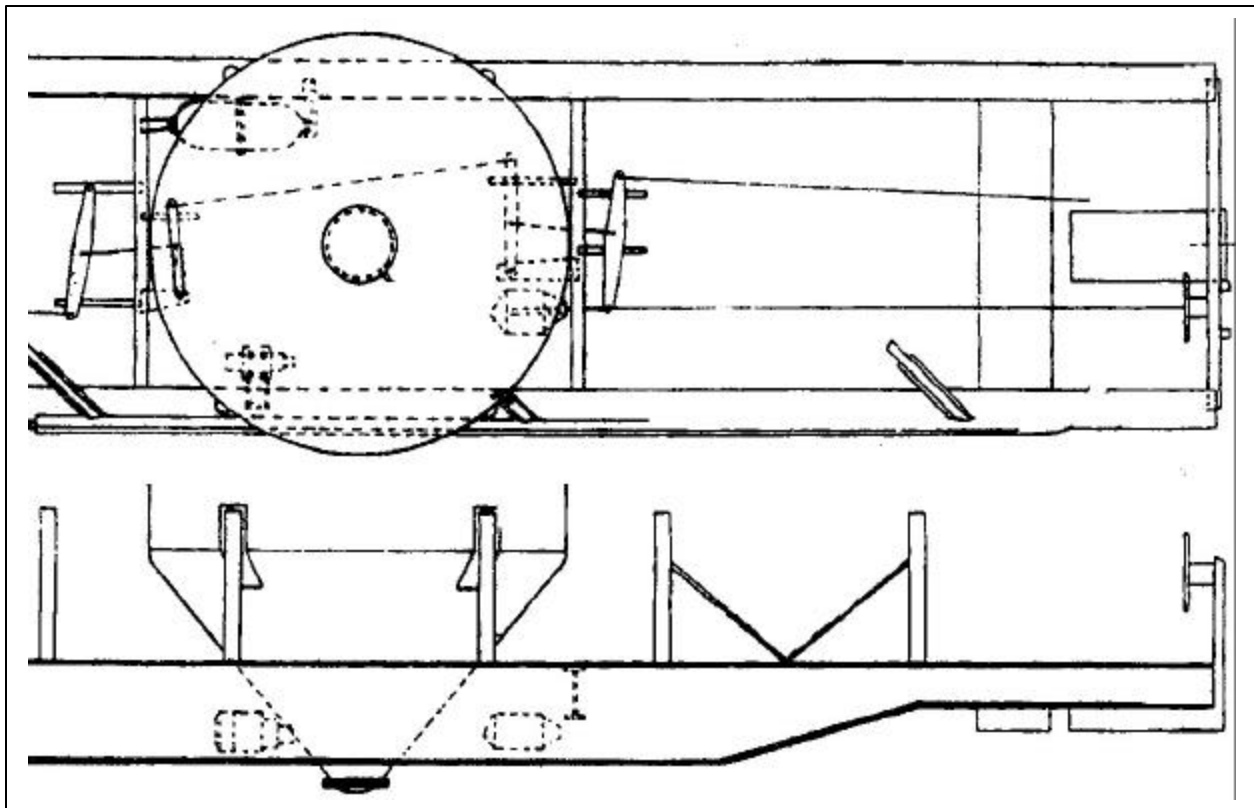
**2** Locate the frame and the tank support. These are the two largest parts and make up the bulk of the car. Attach the tank support centered on the frame. Use the thin ACC cement. Trim the excess of the tank support that overhangs the end of the frame. After the cement has set, remove the "X" bracing that connects the tank bracing.

**3** Cement the tanks in place on the tank supports using thick ACC cement. It is necessary to "web" the cement between the tank and the supports. Make sure the tanks appear straight from all angles. Take time with this step since it will affect the appearance of the finished model.

**4** Attach the draft gear box covers with the 1/8" 2-56 screws.

**5** Attach the catwalks to the top of the tanks with thick ACC cement. It will be necessary to trim the ends to get a fit between the tanks and not overhang the ladders. Attach the ladders between the top of the end tanks to the deck of the car.

**6** Attach the three brake components to the inside of the underframe as shown. Drill a #76 hole in the brake wheel and the brake stand. Use the small pin to attach the brake wheel to the brake stand. Install at the end of the car with the wheel facing in. The diagram shows extra brake detail parts that are not furnished.



7 Paint the car using a lacquer based primer such as Floquil's. paint the tops of the tanks gray - primer works. Paint the rest of the car primary red - SOO line red by Floquil is a good color and it is a gloss which makes it suitable for decaling.

8 Decal the car according to the diagram provided. Set the decals using a setting solution such as Champ's Solvaset or other suitable one. Overcoat the entire car with Testor's Dullcote to dull the decal shine and protect the finished painted car. Install couplers and trucks. ENJOY!

